

Oracle® Retail Dynamic Data Service

Guide

Release 16.0.030

F20160-02

August 2019

Oracle Retail Dynamic Data Service Guide, Release 16.0.030

F20160-02

Copyright © 2019, Oracle and/or its affiliates. All rights reserved.

Primary Author: Gayathri Joshi, Sanal Parameswaran

Contributing Author: Nathan Young

This software and related documentation are provided under a license agreement containing restrictions on use and disclosure and are protected by intellectual property laws. Except as expressly permitted in your license agreement or allowed by law, you may not use, copy, reproduce, translate, broadcast, modify, license, transmit, distribute, exhibit, perform, publish, or display any part, in any form, or by any means. Reverse engineering, disassembly, or decompilation of this software, unless required by law for interoperability, is prohibited.

The information contained herein is subject to change without notice and is not warranted to be error-free. If you find any errors, please report them to us in writing.

If this is software or related documentation that is delivered to the U.S. Government or anyone licensing it on behalf of the U.S. Government, then the following notice is applicable:

U.S. GOVERNMENT END USERS: Oracle programs, including any operating system, integrated software, any programs installed on the hardware, and/or documentation, delivered to U.S. Government end users are "commercial computer software" pursuant to the applicable Federal Acquisition Regulation and agency-specific supplemental regulations. As such, use, duplication, disclosure, modification, and adaptation of the programs, including any operating system, integrated software, any programs installed on the hardware, and/or documentation, shall be subject to license terms and license restrictions applicable to the programs. No other rights are granted to the U.S. Government.

This software or hardware is developed for general use in a variety of information management applications. It is not developed or intended for use in any inherently dangerous applications, including applications that may create a risk of personal injury. If you use this software or hardware in dangerous applications, then you shall be responsible to take all appropriate fail-safe, backup, redundancy, and other measures to ensure its safe use. Oracle Corporation and its affiliates disclaim any liability for any damages caused by use of this software or hardware in dangerous applications.

Oracle and Java are registered trademarks of Oracle and/or its affiliates. Other names may be trademarks of their respective owners.

Intel and Intel Xeon are trademarks or registered trademarks of Intel Corporation. All SPARC trademarks are used under license and are trademarks or registered trademarks of SPARC International, Inc. AMD, Opteron, the AMD logo, and the AMD Opteron logo are trademarks or registered trademarks of Advanced Micro Devices. UNIX is a registered trademark of The Open Group.

This software or hardware and documentation may provide access to or information about content, products, and services from third parties. Oracle Corporation and its affiliates are not responsible for and expressly disclaim all warranties of any kind with respect to third-party content, products, and services unless otherwise set forth in an applicable agreement between you and Oracle. Oracle Corporation and its affiliates will not be responsible for any loss, costs, or damages incurred due to your access to or use of third-party content, products, or services, except as set forth in an applicable agreement between you and Oracle.

Value-Added Reseller (VAR) Language

Oracle Retail VAR Applications

The following restrictions and provisions only apply to the programs referred to in this section and licensed to you. You acknowledge that the programs may contain third party software (VAR applications) licensed to Oracle. Depending upon your product and its version number, the VAR applications may include:

- (i) the **MicroStrategy** Components developed and licensed by MicroStrategy Services Corporation (MicroStrategy) of McLean, Virginia to Oracle and imbedded in the MicroStrategy for Oracle Retail Data Warehouse and MicroStrategy for Oracle Retail Planning & Optimization applications.
- (ii) the **Wavelink** component developed and licensed by Wavelink Corporation (Wavelink) of Kirkland, Washington, to Oracle and imbedded in Oracle Retail Mobile Store Inventory Management.
- (iii) the software component known as **Access Via**[™] licensed by Access Via of Seattle, Washington, and imbedded in Oracle Retail Signs and Oracle Retail Labels and Tags.
- (iv) the software component known as **Adobe Flex**[™] licensed by Adobe Systems Incorporated of San Jose, California, and imbedded in Oracle Retail Promotion Planning & Optimization application.

You acknowledge and confirm that Oracle grants you use of only the object code of the VAR Applications. Oracle will not deliver source code to the VAR Applications to you. Notwithstanding any other term or condition of the agreement and this ordering document, you shall not cause or permit alteration of any VAR

Applications. For purposes of this section, "alteration" refers to all alterations, translations, upgrades, enhancements, customizations or modifications of all or any portion of the VAR Applications including all reconfigurations, reassembly or reverse assembly, re-engineering or reverse engineering and recompilations or reverse compilations of the VAR Applications or any derivatives of the VAR Applications. You acknowledge that it shall be a breach of the agreement to utilize the relationship, and/or confidential information of the VAR Applications for purposes of competitive discovery.

The VAR Applications contain trade secrets of Oracle and Oracle's licensors and Customer shall not attempt, cause, or permit the alteration, decompilation, reverse engineering, disassembly or other reduction of the VAR Applications to a human perceivable form. Oracle reserves the right to replace, with functional equivalent software, any of the VAR Applications in future releases of the applicable program.

Contents

Send Us Your Comments	ix
Preface	xi
Audience	xi
Customer Support	xi
Review Patch Documentation	xi
Improved Process for Oracle Retail Documentation Corrections	xii
Oracle Retail Documentation on the Oracle Technology Network	xii
Conventions	xii
1 Introduction	
What is DDS?	1-1
Need for DDS	1-1
Functionality Offered	1-1
2 Installation Prerequisites	
Installation and Setup Instructions	2-1
Prerequisites	2-1
Installing WebLogic	2-1
Creating the Required Schema Using Repository Creation Utility	2-6
Creating a WebLogic Domain with JRF	2-10
3 Deploying DDS Web Application	
Preparing the Database for DDS Installation	3-1
Deploying DDS Web Application on the WebLogic Servers	3-1
Redeploying DDS Web Application	3-4
Testing the Deployment	3-4
4 Security	
Access Levels	4-1
Table Level Security	4-2
Column Level Security	4-2
Row Level Security	4-2
Security Setup	4-3

System Options.....	4-3
---------------------	-----

5 RESTful Services

Discover.....	5-1
Get Data.....	5-1
Get Data from a Table.....	5-1
Insert Data.....	5-2
Update Data.....	5-2
Delete Data	5-2
Get Schemas	5-3
Get Tables	5-3
Get Columns for a Table	5-3
Get System Options	5-3
Create System Options.....	5-3
Update System Options	5-3
Delete System Options.....	5-4
Reset Cache.....	5-4

6 Security RESTful Services

Get Security Groups	6-1
Get Security Group Permissions.....	6-1
Get Access Levels	6-1
Get Security Config for a Schema.....	6-1
Get All Security Config.....	6-1
Get All Table Level Securities	6-1
Get Table Level Security for Table.....	6-2
Get Table Level Security for Table and Group.....	6-2
Get Column Level Security for Table and Group	6-2
Get Row Level Security for Table and Group	6-2
Create Access Level.....	6-2
Update Access Level	6-2
Delete Access Level.....	6-3
Create Table Level Security	6-3
Create Table Level Securities	6-3
Update Table Level Security	6-4
Update Table Level Securities.....	6-4
Delete Table Level Security.....	6-4
Delete Table Level Security by Id	6-5
Delete Table Level Securities by Type	6-5
Create Column Level Security	6-5
Update Column Level Security.....	6-5
Delete Column Level Security.....	6-6
Create Data Security Configuration	6-6
Update Data Security Configuration.....	6-7
Delete Data Security Configuration	6-7
Create Security Group	6-7
Delete Security Group.....	6-7

Create Row Level Security	6-7
Update Row Level Security	6-8
Delete Row Level Security	6-8
Create Default Security Setup	6-8

7 User Interface

Admin Tab Guide	7-1
Initial Permissions Setup.....	7-1
Manage Access Levels	7-1
Manage Security Groups.....	7-2
Manage Security Permissions.....	7-3
Designer Tab Guide	7-5
Table Definition	7-5
Query Builder	7-5

Send Us Your Comments

Oracle Retail Dynamic Data Service Guide, Release 16.0.030

Oracle welcomes customers' comments and suggestions on the quality and usefulness of this document.

Your feedback is important, and helps us to best meet your needs as a user of our products. For example:

- Are the implementation steps correct and complete?
- Did you understand the context of the procedures?
- Did you find any errors in the information?
- Does the structure of the information help you with your tasks?
- Do you need different information or graphics? If so, where, and in what format?
- Are the examples correct? Do you need more examples?

If you find any errors or have any other suggestions for improvement, then please tell us your name, the name of the company who has licensed our products, the title and part number of the documentation and the chapter, section, and page number (if available).

Note: Before sending us your comments, you might like to check that you have the latest version of the document and if any concerns are already addressed. To do this, access the new Applications Release Online Documentation CD available on My Oracle Support and www.oracle.com. It contains the most current Documentation Library plus all documents revised or released recently.

Send your comments to us using the electronic mail address: retail-doc_us@oracle.com

Please give your name, address, electronic mail address, and telephone number (optional).

If you need assistance with Oracle software, then please contact your support representative or Oracle Support Services.

If you require training or instruction in using Oracle software, then please contact your Oracle local office and inquire about our Oracle University offerings. A list of Oracle offices is available on our Web site at www.oracle.com.

Preface

The *Dynamic Data Service (DDS) User Guide* describes the integration and configuration information for Oracle Retail Dynamic Data Service.

Audience

This guide is for:

- Systems administration and operations personnel
- Systems analysts
- Integrators and implementers
- Business analysts who need information about Product processes and interfaces

Customer Support

To contact Oracle Customer Support, access My Oracle Support at the following URL:

<https://support.oracle.com>

When contacting Customer Support, please provide the following:

- Product version and program/module name
- Functional and technical description of the problem (include business impact)
- Detailed step-by-step instructions to re-create
- Exact error message received
- Screen shots of each step you take

Review Patch Documentation

When you install the application for the first time, you install either a base release (for example, 16.0) or a later patch release (for example, 16.0.030). If you are installing the base release and additional patch releases, read the documentation for all releases that have occurred since the base release before you begin installation. Documentation for patch releases can contain critical information related to the base release, as well as information about code changes since the base release.

Improved Process for Oracle Retail Documentation Corrections

To more quickly address critical corrections to Oracle Retail documentation content, Oracle Retail documentation may be republished whenever a critical correction is needed. For critical corrections, the republication of an Oracle Retail document may at times not be attached to a numbered software release; instead, the Oracle Retail document will simply be replaced on the Oracle Technology Network Web site, or, in the case of Data Models, to the applicable My Oracle Support Documentation container where they reside.

This process will prevent delays in making critical corrections available to customers. For the customer, it means that before you begin installation, you must verify that you have the most recent version of the Oracle Retail documentation set. Oracle Retail documentation is available on the Oracle Technology Network at the following URL:

<http://www.oracle.com/technetwork/documentation/oracle-retail-100266.html>

An updated version of the applicable Oracle Retail document is indicated by Oracle part number, as well as print date (month and year). An updated version uses the same part number, with a higher-numbered suffix. For example, part number E123456-02 is an updated version of a document with part number E123456-01.

If a more recent version of a document is available, that version supersedes all previous versions.

Oracle Retail Documentation on the Oracle Technology Network

Oracle Retail product documentation is available on the following web site:

<http://www.oracle.com/technetwork/documentation/oracle-retail-100266.html>

(Data Model documents are not available through Oracle Technology Network. You can obtain these documents through My Oracle Support.)

Conventions

The following text conventions are used in this document:

Convention	Meaning
boldface	Boldface type indicates graphical user interface elements associated with an action, or terms defined in text or the glossary.
<i>italic</i>	Italic type indicates book titles, emphasis, or placeholder variables for which you supply particular values.
monospace	Monospace type indicates commands within a paragraph, URLs, code in examples, text that appears on the screen, or text that you enter.

Introduction

This chapter gives a brief introduction to the Dynamic Data Service Web Application.

What is DDS?

Dynamic Data Service (DDS) is a cloud based web application with functionality to remotely interact with databases. It has the ability to interact with many schemas at once in a database. The functionality also has the ability to interact with different databases as well.

Data can be viewed and modified through the application. It also has security built into it to restrict data access and modification.

Dynamic Data Service provides access to data in a database through RESTful services. Users can perform CRUD operations on the data using RESTful services. From a security perspective, access to data can be restricted to users at the table, column and row level.

Dynamic Data Service allows users to access data from any configured databases the time of install. Dynamic Data Service UI provides functionality to setup the security and perform CRUD operations on the data.

Need for DDS

DDS is useful for exposing data in a schema with data that is not directly visible to the user. Good examples for this would be a back-end schema of other Oracle applications. Any data that is not exposed by these applications can be viewed using DDS because users cannot connect to database schemas, from a cloud environment, using standard database tools without proper permissions.

Functionality Offered

DDS offers various functionality regarding databases. It can connect to various database connections. The application then discovers the schema inside the databases and allows the user to work and interact with the tables and data within the tables. The high level list of functionalities offered:

- Schema Discovery
- Viewing Table Definition
- Querying table data
- Creation, modification and deletion of records
- Bulk Updates and Deletion of data in tables

- Security setup for limiting data access and modification

Installation Prerequisites

This chapter describes the procedure to install the WebLogic 12c runtime and deploy the tool's EAR file. For more information about domain creation and other server related information, see the WebLogic application server documents.

Installation and Setup Instructions

This section describes the installation and setup instructions including the installation pre-requisites, preparing the WebLogic server, creating a WebLogic domain, verifying installation of JRF runtime libraries and deploying the EAR file. It also describes guidelines to set up security.

Note: The windows included in the following procedures are for example purposes only. Because these procedures must be followed for each application, valid values vary. Therefore, consider the illustrations as guides only; the values shown may not always apply.

Prerequisites

DDS Web Application requires Oracle WebLogic Server 12c (12.2.1.3.0), built with Java 8 (JDK 1.8 64 bit with the latest security updates).

Installing WebLogic

To get the JRF runtime option while creating the domain, install the Application Development Runtime. To obtain Application Development Runtime, go to the Oracle Technology Network and take the following steps:

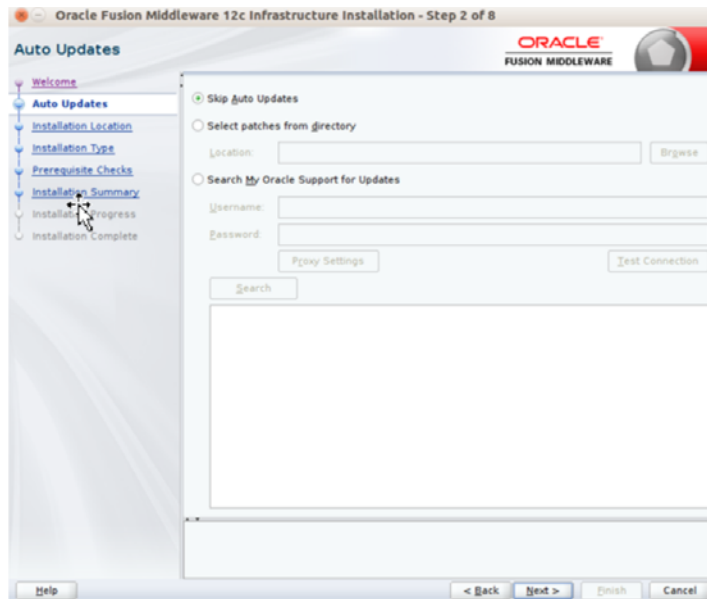
1. Find `fmw_12.2.1.3.0_infrastructure_Disk1_1of1.zip` and download this file to your system.
2. Extract the contents of this zip file to your system. You will use the `fmw_12.2.1.3.0_infrastructure.jar` file to run the installer.
3. Run the installer by executing the jar file:

```
java -jar fmw_12.2.1.3.0_infrastructure.jar
```

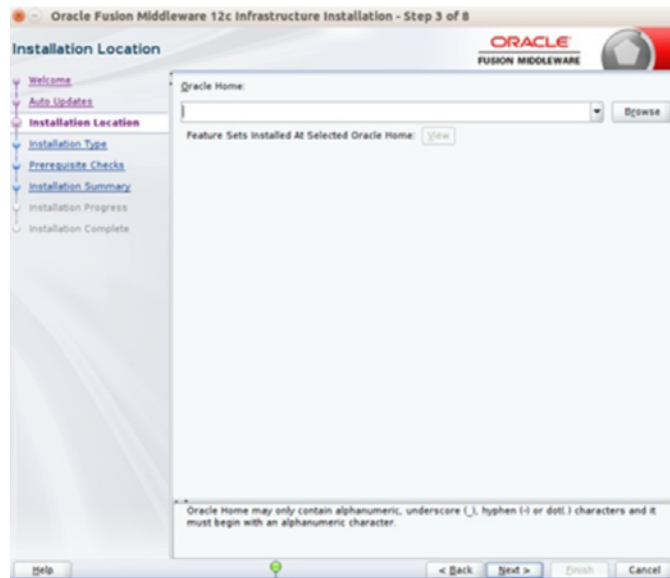
The Welcome window displays.



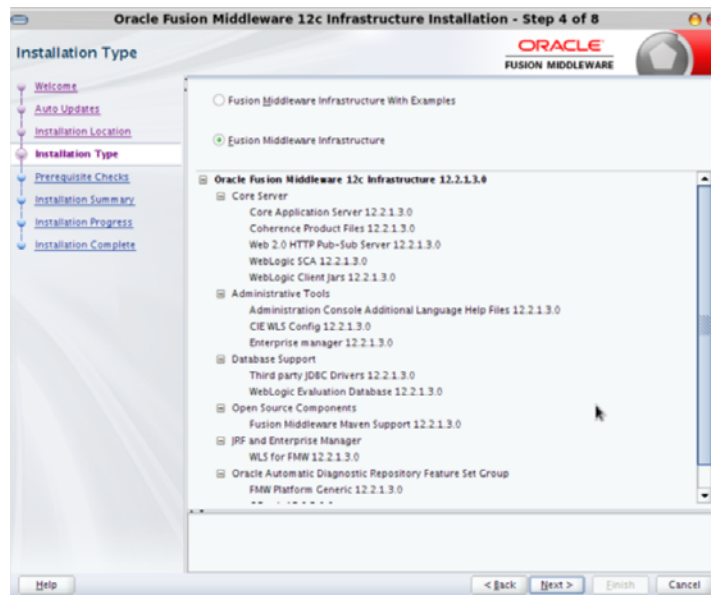
4. Click **Next**. The Auto Updates window displays. Select the appropriate option.



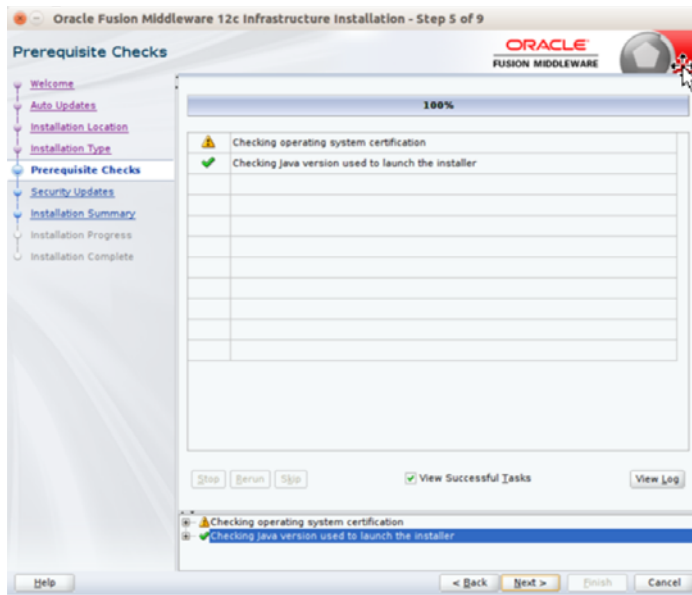
5. Click **Next**. The Installation Location window displays. Click **Browse** to select the Oracle Home location where the WebLogic Server is to be installed.



6. Click **Next**. The Installation Type window displays. Select the type of installation.



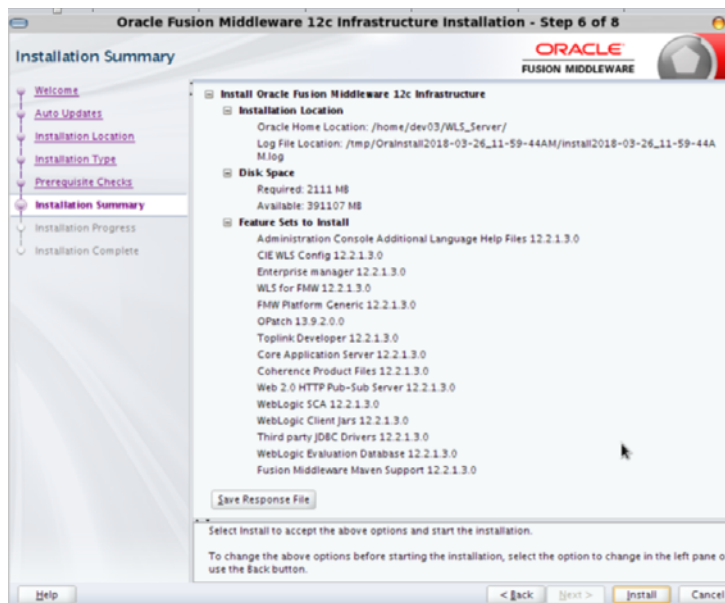
7. Click **Next**. The installer performs the pre-requisite checks and ensures all required conditions are satisfied.



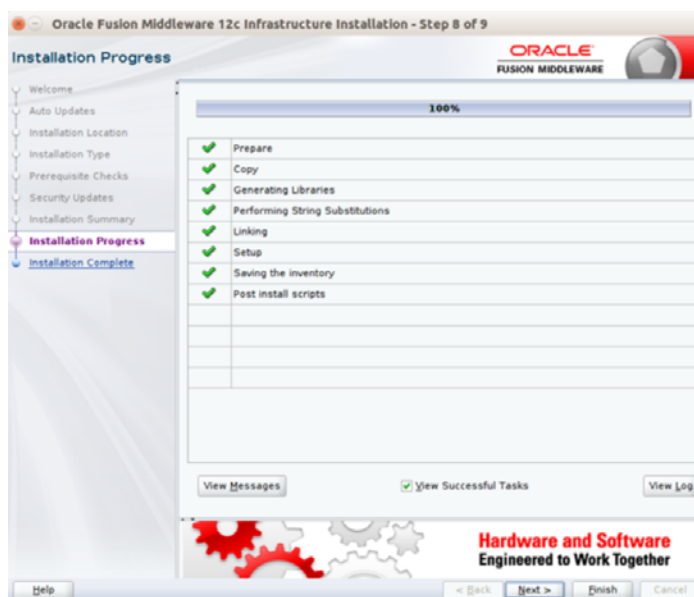
8. When the pre-requisite check completes successfully, click **Next**. The Security Updates window will display. Enter the information as required.



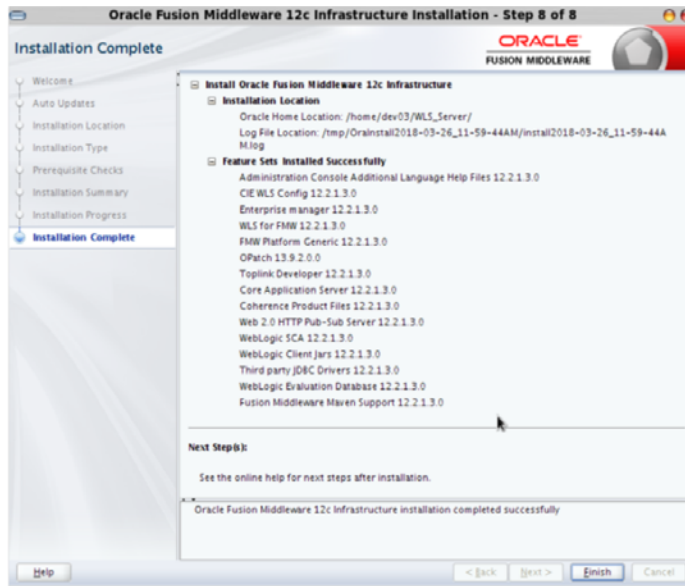
9. Click **Next**. The Installation Summary window displays.



10. Click **Install**. The Installation Progress window displays.



11. Click **Next** when the installation completes. The Installation Complete window displays.



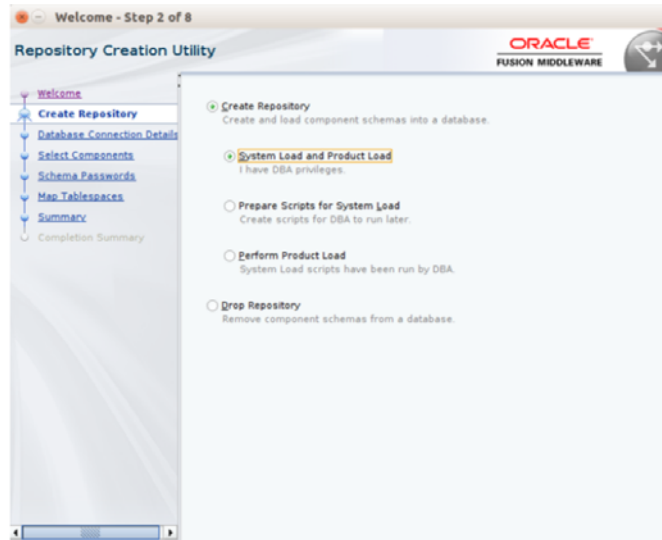
Creating the Required Schema Using Repository Creation Utility

To create a schema user for the dynamic_data_service domain, take the following steps:

1. Run the RCU from the <MW_HOME>/oracle_common/bin folder. The Welcome window displays.



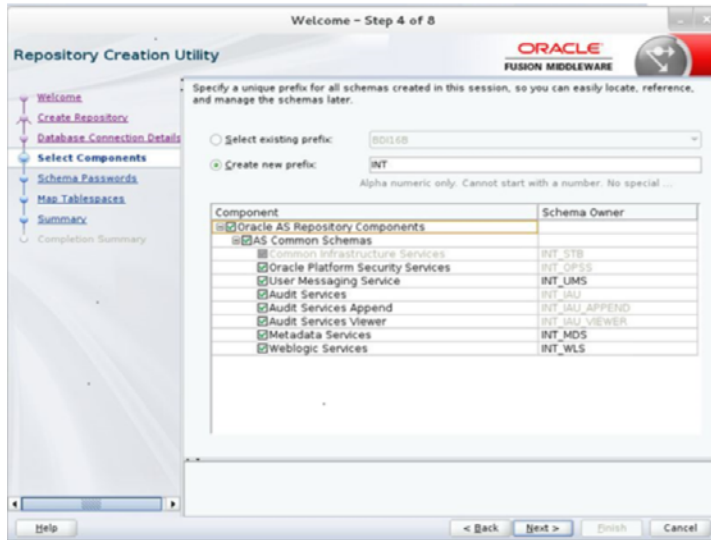
2. Click Next and select the Create Repository option.



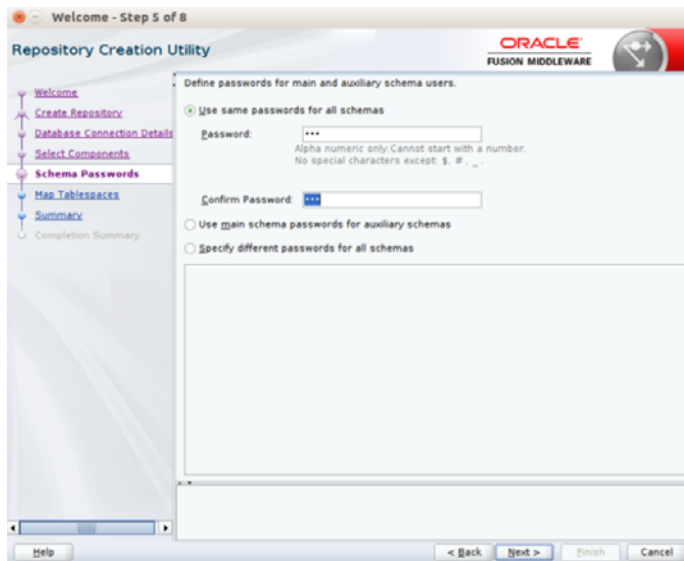
3. Click **Next**. Enter the database credentials where the schema user has to be created.



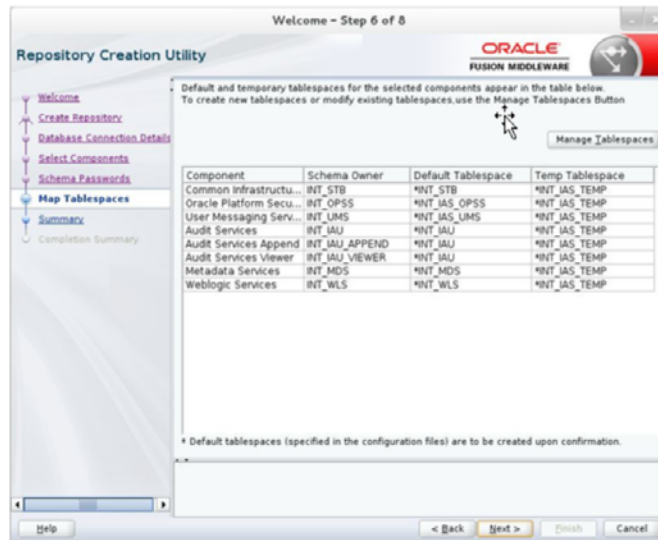
4. Click **Next**. Specify the prefix to be used for the schema user creation. For example, INT. Select Metadata Services, WebLogic Services, and Oracle Platform Security Services.



5. Click Next. Specify the password.



6. Click Next. This window provides the details for tablespaces created as part of schema creation.



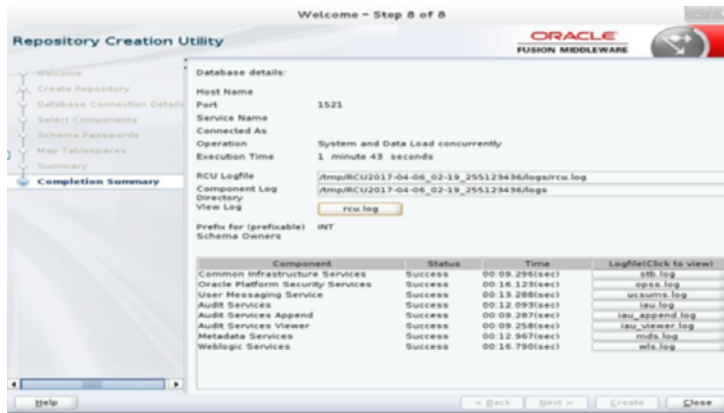
7. Click **Next**. The Confirmation window displays.



8. Click **OK**. The Summary window displays.



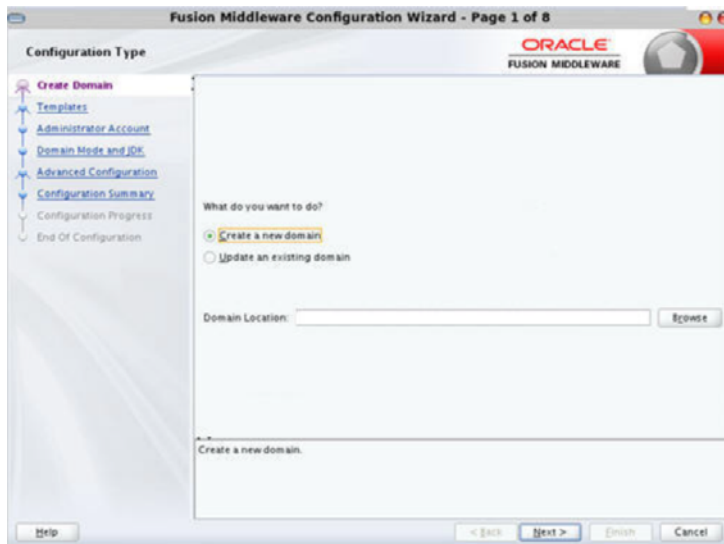
9. Click **Create** to create the schema. This could take a while to complete. When complete the Summary window displays.



Creating a WebLogic Domain with JRF

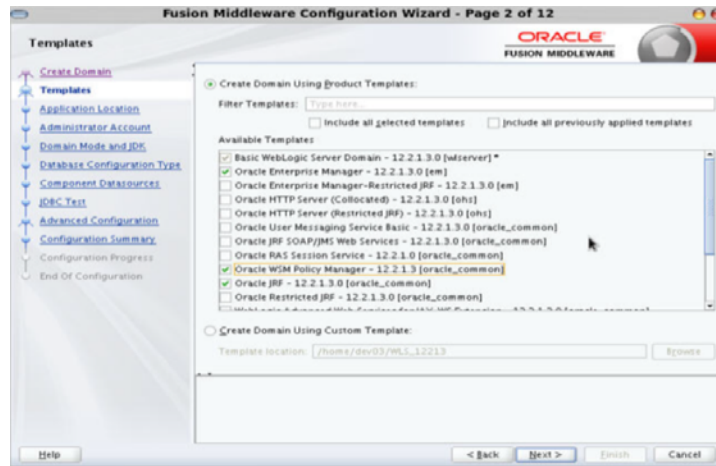
To create a new WebLogic domain with ADF runtime libraries, take the following steps:

1. Run the config.sh from the <ORACLE_HOME>/oracle_common/common/bin folder. The Configuration Type window displays.

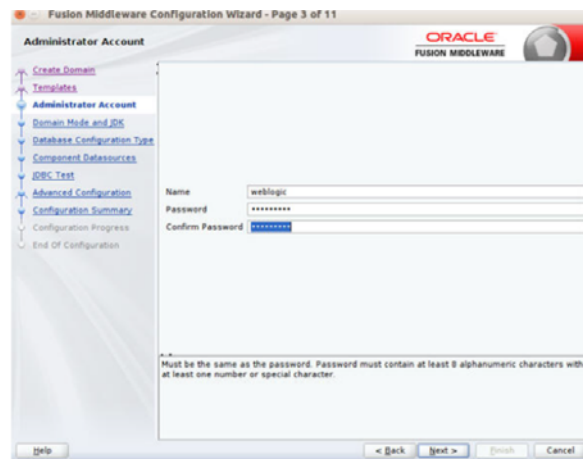


2. Select Create a new domain, and provide a domain location, then click Next. The Templates window displays. By default, the Basic WebLogic Server Domain - 12.2.1.0 [wlserver] check box is selected.

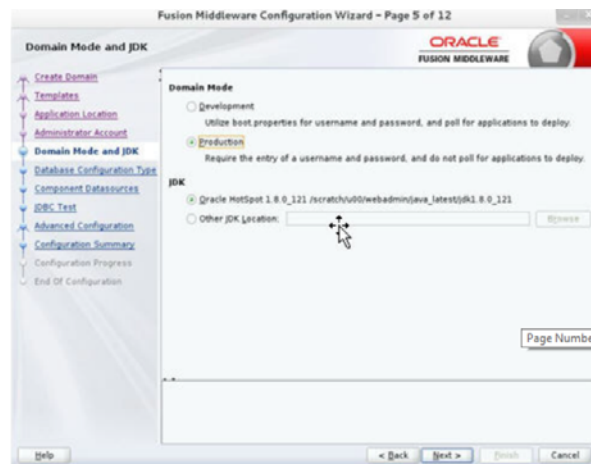
Select the Oracle JRF - 12.2.1.3.0 [oracle_common], Oracle Enterprise Manager - 12.2.1.3.0 [em], Oracle WSM Policy Manager - 12.2.1.3.0 [oracle_common], and WebLogic Coherence Cluster Extension - 12.2.1.3.0[wlsrserver] check boxes.



3. Click **Next**. The Administrator Account window displays. Enter the user credentials that will be used to log into the WebLogic Administration Console.



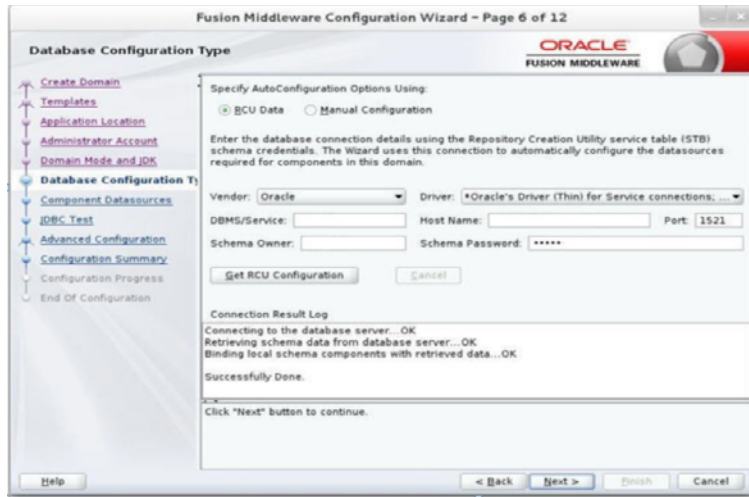
4. Click **Next**. The Domain Mode and JDK window displays. Set the Domain Mode as Production and select the JDK version (JDK 1.8 with the latest security updates is recommended) you want to use.



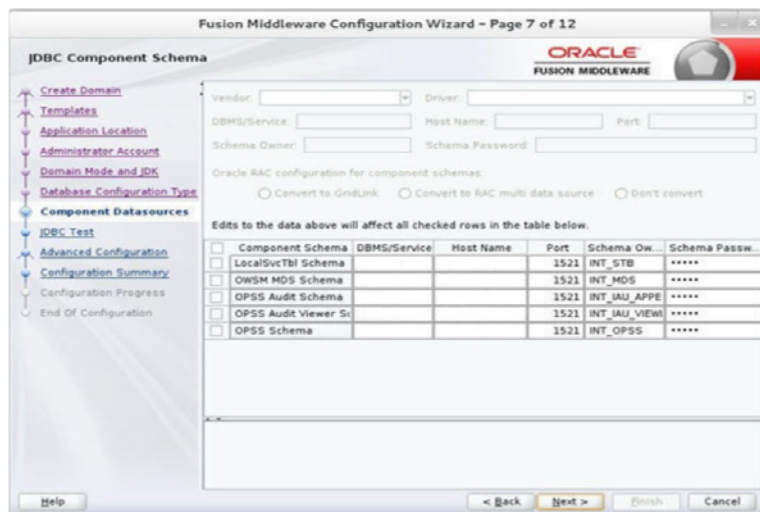
5. Click **Next**. The Database Configuration Type window displays.
 - a. Select the RCU Data radio button.

- b. Select Oracle as the Vendor.
- c. Select Oracle's Driver (Thin) for Service connections; Version 9.0.1 and later.
- d. Enter the Service, Host Name, Port, Schema Owner, and Schema Password for the *_STB schema created using the RCU.
- e. Click Get RCU Configuration.

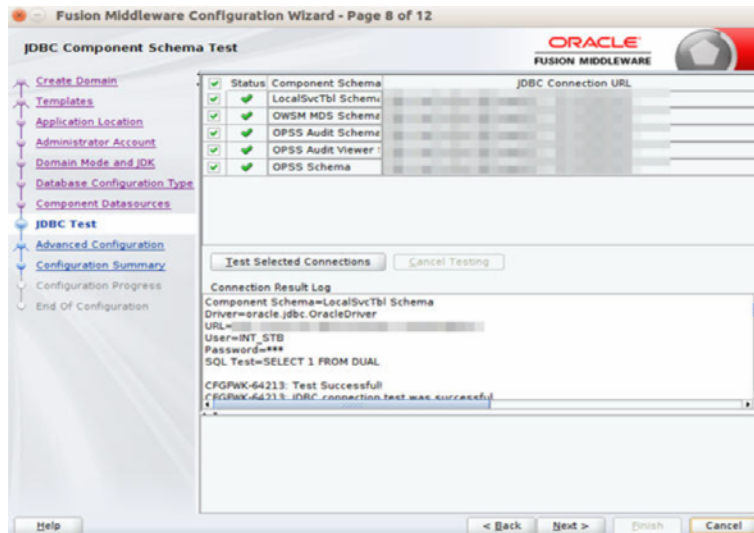
The Connection Result Log displays the connection status.



- 6. Click Next. The JDBC Component Schema window displays.



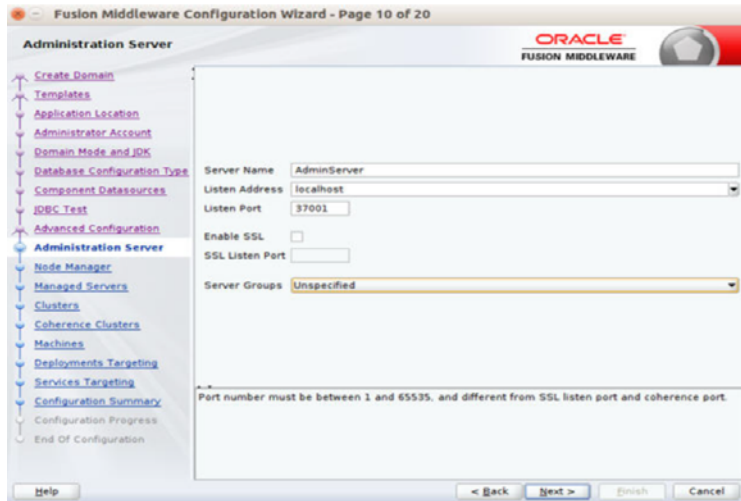
- 7. Click Next. The JDBC Component Schema Test window displays a status indicating the JDBC tests on the schemas were successful.



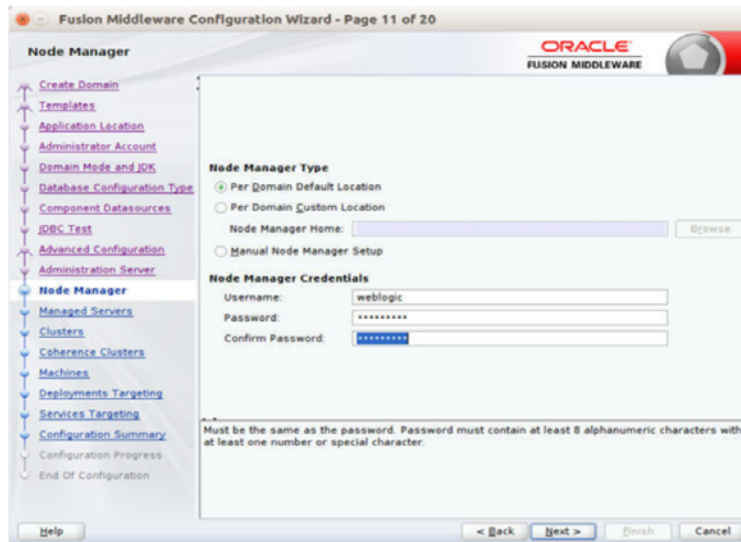
8. Click **Next**. The Advanced Configuration window displays. Select all the checkboxes, except Domain Frontend Host Capture and JMS File Store options, in this window.



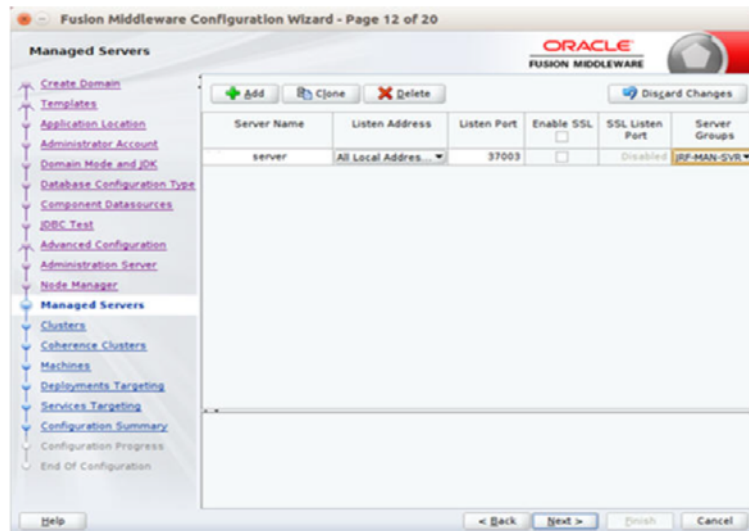
9. Click **Next**. The Administration Server window displays. Enter the Listen Address and the Listen Port details.



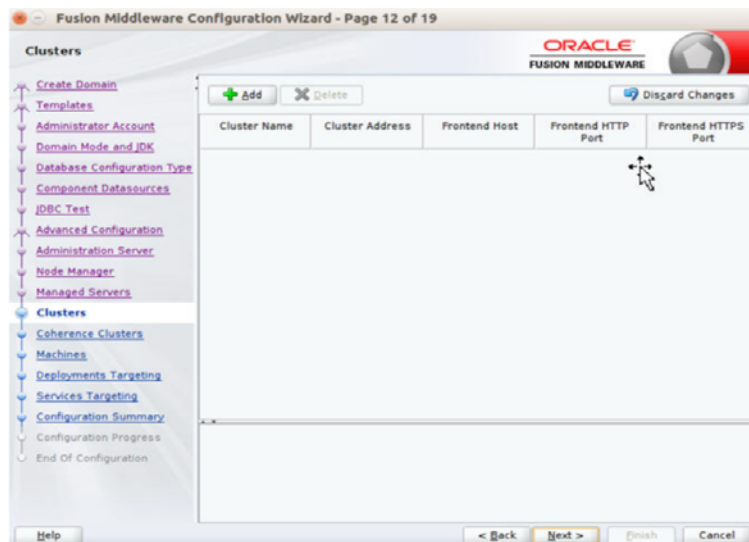
10. Click **Next**. The Node Manager window displays. Select the Node Manager Type and enter the Node Manager Credentials.



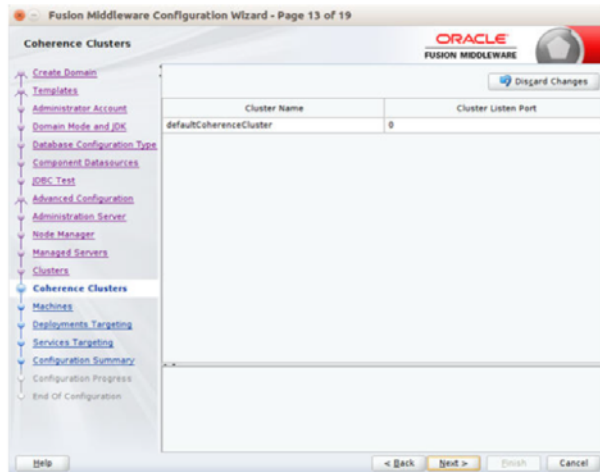
11. Click **Next**. The Managed Servers window displays.
 - a. Click **Add** to add a managed server to deploy the DDS Web Application.
 - b. Enter the Server Name, Listen Address, and Listen Port for the managed server.
 - c. Set the Server Groups to `JRF_MAN_SRV`.



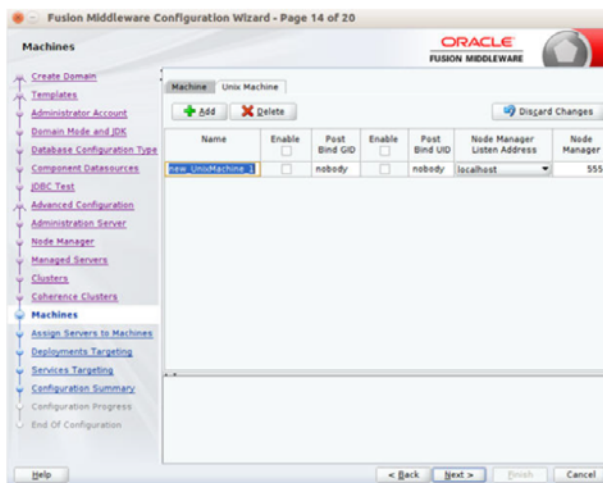
12. Click **Next**. The Clusters window displays.
 - a. Click **Add** to add a cluster. This is an optional step in the procedure.



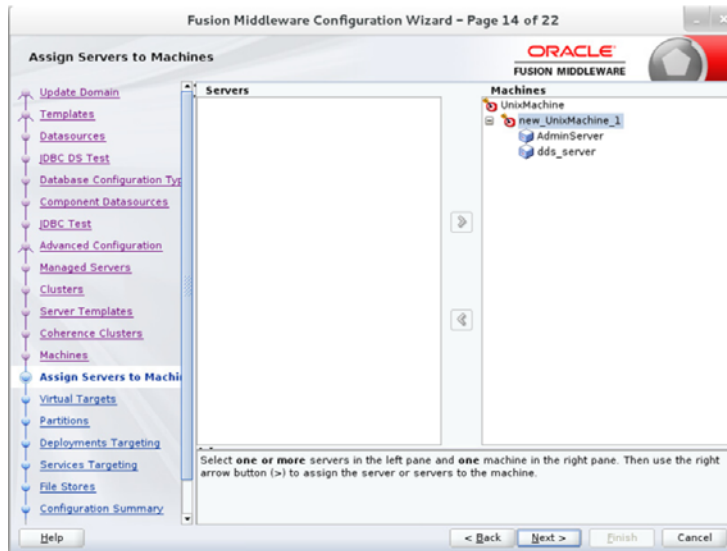
13. Click **Next**. The Coherence Clusters window displays.
 - a. Add a coherence cluster. This is an optional step in the procedure.



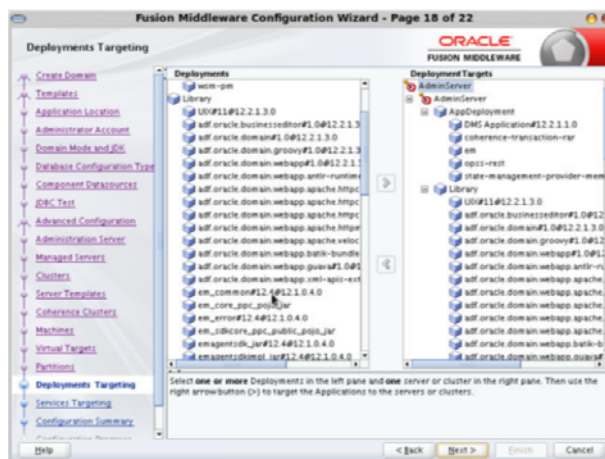
14. Click **Next**. The Machines window displays.
 - a. Click **Add**.
 - b. Enter the Name and the Node Manager Listen Address for the managed server.



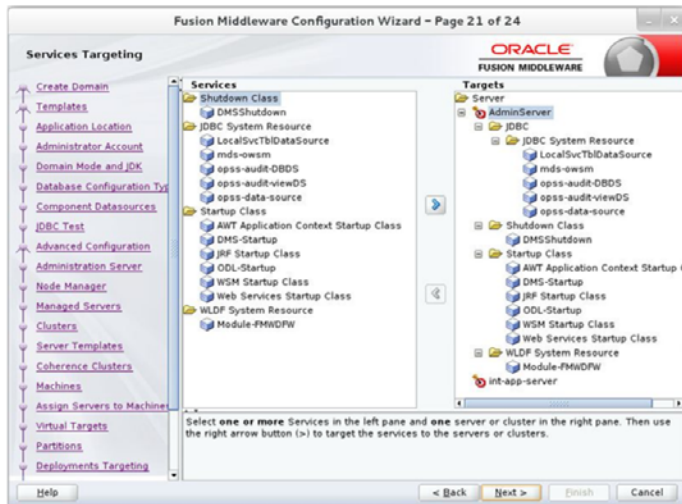
15. Click **Next**. The Assign Servers to Machines window displays. Add the AdminServer and the Managed Server to the machine.



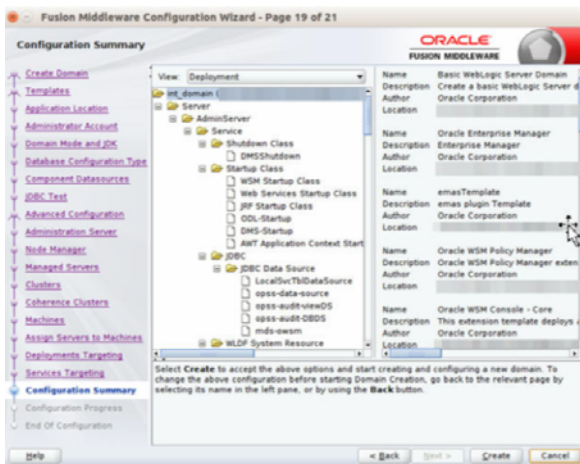
16. Click **Next**. The Deployments Targeting window displays. Select `wsm-pm` from the Deployments section on the left and add it to the `AdminServer` in the Deployment Targets section on the right.



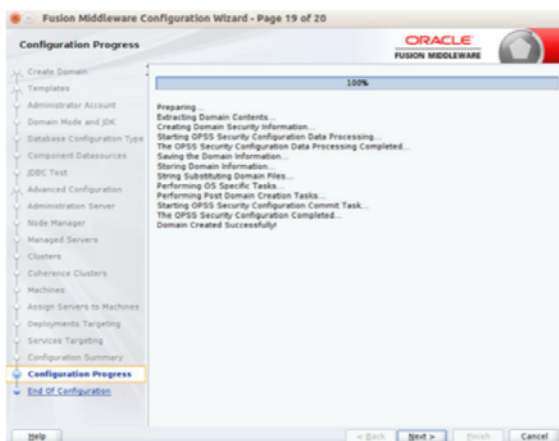
17. Click **Next**. The Services Targeting window displays. Target JDBC services to the Admin and Managed server.



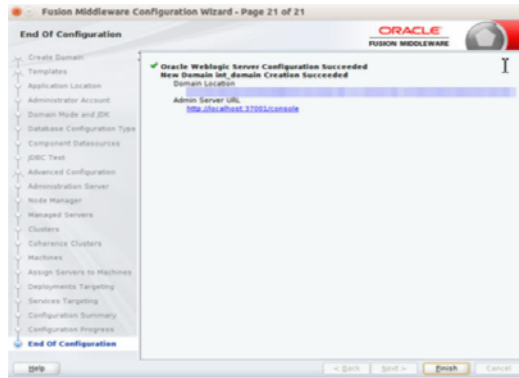
18. Click **Next**. The Configuration Summary window displays. Verify that all information displayed in this window is accurate.



19. Click **Create**. The Configuration Progress window will display a message when the domain is created successfully.



20. Click **Next**. The Configuration Success window displays that describes the Domain Location and Admin Server URL once the configuration is complete.



21. Click **Finish** to complete creating the WebLogic domain and managed servers with ADF runtime.
22. Add the following security policy to \$ORACLE_HOME/wlserver/server/lib/weblogic.policy file.


```
grant codeBase "file:/<DOMAIN_HOME>/-" {
permission java.security.AllPermission;
permission oracle.security.jps.service.credstore.CredentialAccessPermission
"credstoressp.credstore", "read,write,update,delete";
permission oracle.security.jps.service.credstore.CredentialAccessPermission
"credstoressp.credstore.*", "read,write,update,delete";
};
```
23. Start the WebLogic Admin and Managed Server.

Deploying DDS Web Application

This chapter describes the steps you should take to deploy DDS Web Application.

Preparing the Database for DDS Installation

Before you begin installing the DDS Web Application, make sure you have a valid DDS Data Source available. DDS assumes that the tables created, in the DDS data schema configured, are valid.

Deploying DDS Web Application on the WebLogic Servers

To deploy the DDS Web Application ear, take the following steps:

1. Download DynamicDataService16.0.030ForAll16.x.xApps_eng_ga.zip
2. Unpack the folder. A folder dds_home will be available.
3. Edit the dds-deployment-env-info.json as follows:

```
cd dds_home/conf/
vi dds-deployment-env-info.json
```

4. Modify the DataSourceDef and MiddlewareServerDef with information that is specific to your environment.

By default, the JSON files should have placeholders for the DDS, RIB Error Hospital, OCDS and RFI connections, namely DDSDataSource, RibErrorHospitalDataSource, OCDSDataSource and RFIDDataSource. If you plan on using either of these connections, delete the other connections that are not in use.

The table below summarizes the values that need to be changed specific to the environment

Table 3-1 *DataSourceDef and MiddlewareServerDef Values*

Value	Description
DDSDDataSource -> jdbcUrl	Database details of the server where the DDS default data source schema is hosted.
RibErrorHospitalDataSource -> jdbcUrl	Database details of the server where the database schema for the RIB Error hospital table is hosted.
OCDSDataSource -> jdbcUrl	Database details of the server where the database schema for the OCDS application is hosted.
RFIDDataSource -> jdbcUrl	Database details of the server where the database schema for the RFI application is hosted.

Table 3–1 (Cont.) DataSourceDef and MiddlewareServerDef Values

Value	Description
DDSAppServer -> weblogicDomainName	Name of the domain where the DDS application will be deployed.
DDSAppServer -> weblogicDomainHome	Absolute path to the domain. (starts from the root directory)
DDSAppServer -> weblogicDomainAdminServerUrl	Admin server URL link of the domain.
DDSAppServer -> weblogicDomainAdminServerProtocol	Web Protocol to be used in the domain. (Can be t3, unsecure or t3s, secure)
DDSAppServer -> weblogicDomainAdminServerHost	Admin server host name. (domain.example.name.com)
DDSAppServer -> weblogicDomainAdminServerPort	Admin server host port number
DDSAppServer -> weblogicDomainTargetManagedServer Name	Name of the managed server where DDS will be deployed.
DDSAppServer -> DDSAdminUiUrl	The complete URL link to the deployed DDS application. (http://<host_name>:<managed_sever_port>/)

Note: The alias names in the configuration files should not be changed.

The following is an example configuration:

```
"DataSourceDef": {
  "DDSDataSource": {
    "dataSourceName": "DDSDataSource",
    "dataSourceClass": "oracle.jdbc.pool.OracleDataSource",
    "dataSourceJndiName": "jdbc/DDSDataSource",
    "jdbcUrl": "jdbc:oracle:thin:@//dbhost.example.com:1522/pdborcl1",
    "jdbcUserAlias": "DDSAdminDataSourceUserAlias",
    "jdbcUser": "GET_FROM_WALLET",
    "jdbcPassword": "GET_FROM_WALLET",
  },

  "RibErrorHospitalDataSource": {
    "dataSourceName": "RibErrorHospitalDataSource",
    "dataSourceClass": "oracle.jdbc.pool.OracleDataSource",
    "dataSourceJndiName": "jdbc/RibErrorHospitalDataSource",
    "jdbcUrl": "jdbc:oracle:thin:@//dbhost.example.com:1522/pdborcl1",
    "jdbcUserAlias": "RibErrorHospitalDataSourceUserAlias",
    "jdbcUser": "GET_FROM_WALLET",
    "jdbcPassword": "GET_FROM_WALLET",
  },

  "OCDSDataSource": {
    "dataSourceName": "OCDSDataSource",
    "dataSourceClass": "oracle.jdbc.pool.OracleDataSource",
    "dataSourceJndiName": "jdbc/OCDSDataSource",
    "jdbcUrl": "jdbc:oracle:thin:@//dbhost.example.com:1522/pdborcl1",
    "jdbcUserAlias": "OCDSDataSourceUserAlias",
```

```

"jdbcUser": "GET_FROM_WALLET",
"jdbcPassword": "GET_FROM_WALLET",
},

"RFIDDataSource": {
"dataSourceName": "RFIDDataSource",
"dataSourceClass": "oracle.jdbc.pool.OracleDataSource",
"dataSourceJndiName": "jdbc/RFIDDataSource",
"jdbcUrl": "jdbc:oracle:thin:@//dbhost.example.com:1522/pdborcl",
"jdbcUserAlias": "RFIDDataSourceUserAlias",
"jdbcUser": "GET_FROM_WALLET",
"jdbcPassword": "GET_FROM_WALLET",
}
}
"MiddlewareServerDef": {
"DDSAppServer": {
"weblogicDomainName": "dds_domain",
"weblogicDomainHome": "home/oracle/middleware_1221/user_projects/domains/dds_
domain",
"weblogicDomainAdminServerUrl": "t3://ddsdomainhost.example.com:7001",
"weblogicDomainAdminServerProtocol": "t3",
"weblogicDomainAdminServerHost": " ddsdomainhost.example.com ",
"weblogicDomainAdminServerPort": "7001",
"weblogicDomainAdminServerUserAlias": "DDSAdminServerUserAlias",
"weblogicDomainTargetManagedServerName": "dds_managed_server",

"DDSAdminUiUrl": "http://ddsdomainhost.example.com:7003",
"DDSAdminUiUserGroup": "DdsAdminGroup",
"DDSAdminUiUserAlias": "DDSAdminUiUserAlias",
"DDSAdminUiUser": "GET_FROM_WALLET",
"DDSAdminUiPassword": "GET_FROM_WALLET",

"DDSOperatorUiUserGroup": "DdsOperatorGroup",
"DDSOperatorUiUserAlias": "DDSOperatorUiUserAlias",
"DDSOperatorUiUser": "GET_FROM_WALLET",
"DDSOperatorUiPassword": "GET_FROM_WALLET",

"DDSMonitorUiUserGroup": "DdsMonitorGroup",
"DDSMonitorUiUserAlias": "DDSMonitorUiUserAlias",
"DDSMonitorUiUser": "GET_FROM_WALLET",
"DDSMonitorUiPassword": "GET_FROM_WALLET"

}
} ,
"DDSAdminApplication": {
"DDSAdminAppUses": [
"DDSAppServer"
]
}
}

```

5. Run the deployer script to create the datasource and deploy the DDS Web Application.

```

$cd dds_home/bin/
$ssh dds-deployer.sh -setup-credentials -deploy-DDS-app

```

6. Enter the parameter value that is prompted by the script.
7. Bounce the WebLogic Server hosting the DDS Web Application.
8. Restrict Access to the DDS home folder:

```

$cd ..

```

```
$chmod -R 700 dds_home
```

Redeploying DDS Web Application

If you have already configured the credentials and can use the same credentials (typically when redeploying the app), you can run the deployer with the `-use-existing-credentials` option as follows, and you will not be prompted for the credentials again for the deployment.

```
sh dds-deployer.sh -use-existing-credentials -deploy-job-admin-app
```

Testing the Deployment

After you deploy the server successfully, the DDS Web Application can be accessed using the following URL:

```
http://<host-server>:<managed-server-port>/dynamic-data-service-ui
```

Dynamic Data Service provides table level, row level, and column level security. All the end points are protected with basic authentication and role based authorization.

There are three security groups that provide role based authorization.

There are three Roles and three Groups.

Roles:

- **AdminRole** - Users with this role have access to all the functions of the DDS app. They can also setup the security permissions for other users.
- **OperatorRole** - Users with this role have the ability to read, write and modify content in the schemas and tables. However they will not have access to the admin functions and cannot setup security permissions.
- **MonitorRole** - Users with this role can only read the data from schemas and tables. They also will not have access to security setup functions.

Groups:

- **DdsAdminGroup** - Users that belong to this group can perform all operations
- **DdsOperatorGroup** - Users that belong to this group can perform all operations except security setup
- **DdsMonitorGroup** - Users that belong to this group can only perform read only operations

Access Levels

Access Level defines security permissions.

Here are the permissions that can be associated with an access level.

- DataReadPermission
- DataCreatePermission
- DataUpdatePermission
- DataDeletePermission
- RowAccessPermission
- ColumnAccessPermission
- DataSecuritySetupPermission

The following access levels are created when default security is setup using the end point (/resources/admin/security/setup/{schemaName}).

- **DdsAdminAccessLevel** - Provides all permissions
- **DdsOperatorAccessLevel** - Provides all permissions except DataSecuritySetupPermission
- **DdsMonitorAccessLevel** - Provides DataReadPermission, RowAccessPermission and ColumnAccessPermission

Table Level Security

Table level security defines who can access a table with set of allowed permissions. A table cannot be accessed if table level security is not setup.

Table level security is associated with the following information.

- Schema Name
- Table Name
- Security Group - Provides who can access the table
- Access Level - Provides permissions

Table level securities are set up for all tables when default security is setup using the end point. Every table is setup to be accessed by users in all security groups with default permissions.

Example

Table - DdsAdminGroup, DdsAdminAccessLevel

Table - DdsOperatorGroup, DdsOperatorAccessLevel

Table - DdsMonitorGroup, DdsMonitorAccessLevel

Column Level Security

Column level security defines who can access a column as well as permission to access the column. By default, Dynamic Data Service allows access to a column if the user has access to the table.

Column level security is defined using the following information.

- Column Name
- Column Permission Type - Valid values are ALLOW, DONT_ALLOW, MASK
- Table Level Security

Row Level Security

Row level security defines who can access row(s) in a table. Row level security can be enabled if the table has user and group columns.

Row level security is defined using the following information.

- EnableRowAccess
- UserColumnName
- GroupColumnName

- TableLevelSecurity

Security Setup

Follow the steps to setup security. Users will not be able access any data without the security setup. Only users that belong to the DdsAdminGroup can set up security.

1. Run the end point (/resources/admin/security/config) to create security configuration for the schema.

```
{
  "schemaName": "schema",
  "enableSecurity": "true",
  "tableLevelSecurityType": "WHITELIST",
  "columnLevelSecurityType": "BLACKLIST"
}
```

2. Run default security setup end point (/resources/admin/security/setup/{schemaName}) to set up default security for all tables.

If the default security setup is not sufficient, use Dynamic Data Service UI to setup the access levels, security groups, and table level securities.

System Options

Dynamic Data Service finds data sources with the JNDI name that starts with "jdbc" by default. The following system option can be used to provide a different JNDI Name pattern.

dataSourcePattern

The system option can be setup using the end point (/resources/system-setting/system-options).

RESTful Services

This chapter provides information about the RESTful Services used by DDS.

Discover

This end point returns a list of Dynamic Data Service end points.

HTTP Operation: GET

Path: **/resources/discover**

Get Data

This end point returns data from the provided schema and table(s). The query parameters "fromTables" allows single or multiple tables.

The query parameter "rowFilter" can be used to provide a join between tables.

Tables and columns need to be qualified if multiple tables are provided in "fromTables". The data is returned in JSON/XML format and one page of data is returned. The response contains a link to the next page if there are additional pages.

HTTP Operation: GET

Path: **/resources/dds/{schemaName}/data?fromTables=<tables>**

The following query parameters can be provided to filter the data.

- columnFilter - Columns to be included in the response
- rowFilter - Predicate can be provided in the rowFilter to filter the data
- sortBy - Valid values are ascending(asc) or descending(desc)
- Page - Page number
- pageLimit - Number of records to be included in the page. The default page size is 25
- format - Valid values are short or long. Short format provides data without column names. Long format provides data with column names.

Get Data from a Table

This end point returns data from a table using a primary key.

HTTP Operation: GET

Path: **/resources/dds/{schemaName}/{table}?idFilter=<Primary Key>**

Insert Data

This end point inserts data in a table. Input can be a single record or multiple records provided in JSON format. Users that belong to the admin or operator group can only perform this operation. Users also need to have DataCreatePermission to insert data.

HTTP Operation: PUT

Path: `/resources/dds/{schemaName}/data/{table}`

Sample input for inserting data in the BDI_RECEIVER_OPTIONS table

`/dds/bdi_rms_schema/data/BDI_RECEIVER_OPTIONS`

```
{
  "items":
  [
    {
      "ID":1,
      "BASE_FOLDER":"base",
      "FOLDER_TEMPLATE":"baseTemplate",
      "INTERFACE_MODULE":"interfaceModule",
      "INTERFACE_SHORT_NAME":"interfaceShortName",
      "MERGE_STRATEGY":"mergeStrategy"
    }
  ]
}
```

Update Data

This end point updates data in a table using the rowFilter query parameter and input is provided in JSON format. Users that belong to the admin or operator group can only perform this operation. Users also need to have DataUpdatePermission to update data.

HTTP Operation: POST

Path: `/resources/dds/{schemaName}/data/{table}?rowFilter=<predicate>`

Sample input for updating data in the BDI_SYSTEM_OPTIONS table

`/dds/bdi_rms_schema/data/BDI_SYSTEM_OPTIONS?rowFilter=VARIABLE_NAME='LOADJOBDEF'`

```
{
  "VARIABLE_VALUE": "TRUE"
}
```

Delete Data

This end point deletes data from a table based on the rowFilter query parameter. Users that belong to the admin or operator group can only perform this operation. Users also need to have DataDeletePermission to delete data.

HTTP Operation: DELETE

Path: `/resources/dds/{schemaName}/data/{table}?rowFilter=<predicate>`

Sample End Point

`/dds/bdi_rms_schema/data/BDI_SYSTEM_OPTIONS?rowFilter=VARIABLE NAME='LOADJOBDEF'`

Get Schemas

This end point returns all configured database schemas.

HTTP Operation: GET

Path: `/resources/dds/schemas`

Get Tables

This end point returns all tables from a database schema.

HTTP Operation: GET

Path: `/resources/dds/{schemaName}/tables`

Get Columns for a Table

This end point returns columns for a table.

HTTP Operation: GET

Path: `/resources/dds/{schemaName}/{table}`

Get System Options

This end point returns all system options from the DDS_SYSTEM_OPTIONS table.

HTTP Operation: GET

Path: `/resources/system-setting/system-options`

Create System Options

This end point creates a system option in the DDS_SYSTEM_OPTIONS table.

HTTP Operation: PUT

Path: `/resources/system-setting/system-options`

Sample Input

```
{
  "key": "testKey",
  "value": "testValue"
}
```

Update System Options

This end point updates a system option in the DDS_SYSTEM_OPTIONS table.

HTTP Operation: POST

Path: `/resources/system-setting/system-options`

Sample Input

```
{
  "key": "testKey",
  "value": "testValue1"
}
```

Delete System Options

This end point deletes a system option in the DDS_SYSTEM_OPTIONS table.

HTTP Operation: DELETE

Path: **`/resources/system-setting/system-options/{key}`**

Reset Cache

This end point resets the system option cache.

HTTP Operation: POST

Path: **`/resources/system-setting/reset-cache`**

Security RESTful Services

The security end points are only accessible by users that belong to the admin group.

Get Security Groups

This end point returns configured security groups.

HTTP Operation: GET

Path: `/resources/admin/security/groups`

Get Security Group Permissions

This end point returns all security permissions.

HTTP Operation: GET

Path: `/resources/admin/security/permissions`

Get Access Levels

This end point returns access levels.

HTTP Operation: GET

Path: `/resources/admin/security/accessLevels`

Get Security Config for a Schema

This end point returns the security configuration for a schema.

HTTP Operation: GET

Path: `/resources/admin/security/config/{schemaName}`

Get All Security Config

This end point returns all security configurations.

HTTP Operation: GET

Path: `/resources/admin/security/config`

Get All Table Level Securities

This end point returns all table level securities for a schema.

HTTP Operation: GET

Path: `/resources/admin/security/table/{schemaName}`

Get Table Level Security for Table

This end point returns table level security for a table in a schema.

HTTP Operation: GET

Path: `/resources/admin/security/table/{schemaName}/{tableName}`

Get Table Level Security for Table and Group

This end point returns table level security for a table and group.

HTTP Operation: GET

Path: `/resources/admin/security/table/{schemaName}/{tableName}/{groupName}`

Get Column Level Security for Table and Group

This end point returns column level security for a table and group.

HTTP Operation: GET

Path: `/resources/admin/security/column/{schemaName}/{tableName}/{groupName}`

Get Row Level Security for Table and Group

This end point returns row level security for a table, group, and access level.

HTTP Operation: GET

Path:

`/resources/admin/security/row/{schemaName}/{tableName}/{groupName}/{accessLevel}`

Create Access Level

This end point creates an access level.

HTTP Operation: PUT

Path: `/resources/admin/security/accessLevel`

Sample Input

```
{
  "accessLevelName": "testAccessLevel",
  "accessLevelPermissionVoList": [
    "securityPermission": "DataCreatePermission"
  ]
}
```

Update Access Level

This end point updates an access level.

HTTP Operation: POST

Path: `/resources/admin/security/accessLevel`

Sample Input

```
{
  "accessLevelName": "testAccessLevel",
  "accessLevelPermissionVoList": [
    "securityPermission": "DataCreatePermission"
    "securityPermission": "DataDeletePermission"
  ]
}
```

Delete Access Level

This end point deletes an access level.

HTTP Operation: DELETE

Path: `/resources/admin/security/accessLevel/{accessLevelName}`

Create Table Level Security

This end point creates table level security.

HTTP Operation: PUT

Path: `/resources/admin/security/table`

Sample Input

```
{
  "schemaName": "testSchema",
  "tableName": "TEST",
  "securityGroup": "DDSMonitorGroup",
  "accessLevelVo": {
    "accessLevelName": "testAccessLevel"
  }
}
```

Create Table Level Securities

This end point creates table level securities.

HTTP Operation: PUT

Path: `/resources/admin/security/tables`

Sample Input

```
{
  "tableLevelSecurityVoList": [
    {
      "schemaName": "testSchema",
      "tableName": "TEST",
      "securityGroup": "DDSMonitorGroup",
      "accessLevelVo": {
        "accessLevelName": "testAccessLevel"
      }
    }
  ]
}
```

Update Table Level Security

This end point updates table level security.

HTTP Operation: POST

Path: `/resources/admin/security/table`

Sample Input

```
{
  "schemaName": "testSchema",
  "tableName": "TEST",
  "securityGroup": "DDSMonitorGroup",
  "accessLevelVo": {
    "accessLevelName": "monitorAccessLevel"
  }
}
```

Update Table Level Securities

This end point updates table level securities.

HTTP Operation: POST

Path: `/resources/admin/security/tables`

Sample Input

```
{
  "tableLevelSecurityVoList": [
    {
      "schemaName": "testSchema",
      "tableName": "TEST",
      "securityGroup": "DDSMonitorGroup",
      "accessLevelVo": {
        "accessLevelName": "monitorAccessLevel"
      }
    }
  ]
}
```

Delete Table Level Security

This end point deletes table level security.

HTTP Operation: DELETE

Path: `/resources/admin/security/table`

Sample Input

```
{
  "schemaName": "testSchema",
  "tableName": "TEST",
  "securityGroup": "DDSMonitorGroup",
  "accessLevelVo": {
    "accessLevelName": "testAccessLevel"
  }
}
```

Delete Table Level Security by Id

This end point deletes table level security by id.

HTTP Operation: DELETE

Path: `/resources/admin/security/table/{id}`

Delete Table Level Securities by Type

This end point deletes table level securities.

HTTP Operation: DELETE

Path:

`/resources/admin/security/table/bulk/{schemaName}?keys=<keys>&keyType=<keyType>`

Valid KeyType values: table, securityGroup, accessLevel

If keyType is table, then a list of comma separated table names needs to be provided in the keys query parameter.

If keyType is securityGroup, then a list of comma separated security groups needs to be provided in the keys query parameter.

If keyType is accessLevel, then a list of comma separated access levels need to be provided in the keys query parameter.

Create Column Level Security

This end point creates column level security.

HTTP Operation: PUT

Path: `/resources/admin/security/column`

Valid Column Permission Type values: ALLOW, DONT_ALLOW, MASK

Sample Input

```
{
  "columnName": "testColumn",
  "columnPermissionType": "ALLOW",
  "securityGroup": "DDSEOperatorGroup",
  "tableLevelSecurityVo": {
    "schemaName": "testSchema",
    "tableName": "TEST",
    "securityGroup": "DDSEOperatorGroup",
    "accessLevelVo": {
      "accessLevelName": "testAccessLevel"
    }
  }
}
```

Update Column Level Security

This end point updates column level security.

HTTP Operation: POST

Path: `/resources/admin/security/column`

Valid Column Permission Type values: ALLOW, DONT_ALLOW, MASK

Sample Input

```
{
  "columnName": "testColumn",
  "columnPermissionType": "MASK",
  "securityGroup": "DDSOperatorGroup",
  "tableLevelSecurityVo": {
    "schemaName": "testSchema",
    "tableName": "TEST",
    "securityGroup": "DDSOperatorGroup",
    "accessLevelVo": {
      "accessLevelName": "testAccessLevel"
    }
  }
}
```

Delete Column Level Security

This end point deletes column level security.

HTTP Operation: DELETE

Path: **/resources/admin/security/column**

Sample Input

```
{
  "columnName": "testColumn",
  "tableLevelSecurityVo": {
    "schemaName": "testSchema",
    "tableName": "TEST",
    "securityGroup": "DDSOperatorGroup",
    "accessLevelVo": {
      "accessLevelName": "testAccessLevel"
    }
  }
}
```

Create Data Security Configuration

This end point creates data security configuration.

HTTP Operation: PUT

Path: **/resources/admin/security/config**

Valid values for security type: **WHITELIST, BLACKLIST**

WHITELIST allows access only if security is setup (Table level security)

BLACKLIST denies access to entities (such as column level security) if it is set up and allows others.

Sample Input

```
{
  "schemaName": "testSchema",
  "enableSecurity": "true",
  "tableLevelSecurityType": "WHITELIST",
  "columnLevelSecurityType": "BLACKLIST"
}
```

Update Data Security Configuration

This end point updates the data security configuration.

HTTP Operation: POST

Path: `/resources/admin/security/config`

Valid values for security type: **WHITELIST**, **BLACKLIST**

WHITELIST allows access only if security is setup (such as Table level security)

BLACKLIST denies access to entities (such as column level security) if it is set up and allows others.

Sample Input

```
{
  "schemaName": "testSchema",
  "enableSecurity": "false",
  "tableLevelSecurityType": "WHITELIST",
  "columnLevelSecurityType": "BLACKLIST"
}
```

Delete Data Security Configuration

This end point deletes the data security configuration for a schema.

HTTP Operation: DELETE

Path: `/resources/admin/security/config/{schemaName}`

Create Security Group

This end point creates a security group.

HTTP Operation: PUT

Path: `/resources/admin/security/groups`

Sample Input

```
{
  "groupName": "DDSAdminGroup",
}
```

Delete Security Group

This end point deletes a security group.

HTTP Operation: DELETE

Path: `/resources/admin/security/groups/{groupName}`

Create Row Level Security

This end point creates row level security.

Row level security can be enforced if there are user and group columns in the table.

HTTP Operation: PUT

Path: `/resources/admin/security/row`

Sample Input

```
{
  "enableRowAccess": "true",
  "userColumnName": "USER",
  "groupColumnName": "GROUP",
  "tableLevelSecurityVo": {
    "schemaName": "testSchema",
    "tableName": "TEST",
    "securityGroup": "DDSOperatorGroup",
    "accessLevelVo": {
      "accessLevelName": "testAccessLevel"
    }
  }
}
```

Update Row Level Security

This end point updates row level security for a table.

HTTP Operation: POST

Path: `/resources/admin/security/row`

Sample Input

```
{
  "enableRowAccess": "false",
  "tableLevelSecurityVo": {
    "schemaName": "testSchema",
    "tableName": "TEST",
    "securityGroup": "DDSOperatorGroup",
    "accessLevelVo": {
      "accessLevelName": "testAccessLevel"
    }
  }
}
```

Delete Row Level Security

This end point deletes row level security.

HTTP Operation: DELETE

Path:

`/resources/admin/security/row/{schemaName}/{tableName}/{securityGroup}/{accessLevelName}`

Create Default Security Setup

This end point creates default security setup for all tables in a schema. It creates the following.

Security Groups - DdsAdminGroup, DdsOperatorGroup, DdsMonitorGroup

Access Levels - DdsAdminAccessLevel, DdsOperatorAccessLevel, DdsMonitorAccessLevel

DdsAdminAccessLevel has permissions to all operations.

DDSOperatorAccessLevel has permissions to all operations except DataSecuritySetupPermission

DDSMonitorAccessLevel has permissions to read only operations

HTTP Operation: PUT

Path: **`/resources/admin/security/setup/{schemaName}`**

User Interface

The DDS UI is divided into two sections; Admin tab, and Designer tab. The Admin tab lets admin users control access and perform security operations. The Designer tab lets admin, operators and monitor users perform authorized functions.

This chapter explains the main UI functionality available to the user.

Admin Tab Guide

This tab has all the functions for configuring security related permissions and user access. Only the admin user has access to this tab. The admin can enable read, write and modify access permissions and also limit functionality of a user.

The Admin Tab has three main sections:

- Manage Access Levels
- Manage Security Groups
- Manage Security permissions

Initial Permissions Setup

In order to access the data on tables being viewed in the Designer Tab, first the Table level securities have to be setup in the Admin tab of the DDS Application. The Admin can select the desired database schema from the associated database schema dropdown.

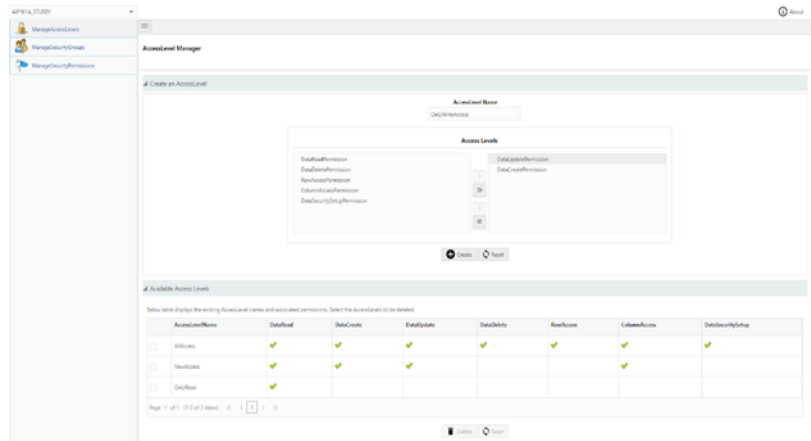
Access to this tab is only allowed to the Admin User.

Manage Access Levels

This tab allows the creation and deletion of Access Levels for data and functionality. These can be assigned to groups for particular tables in a schema.

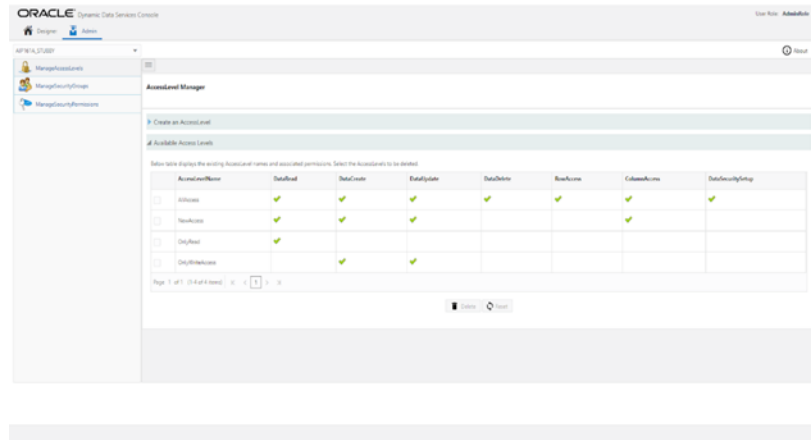
To create an access level

1. Input a name in the Name text box.
2. Select the necessary access permissions.
3. Click **Create**.



To delete an access level

1. Select the Access Level to be deleted from the table which displays the available access levels.
2. Click **Delete**.

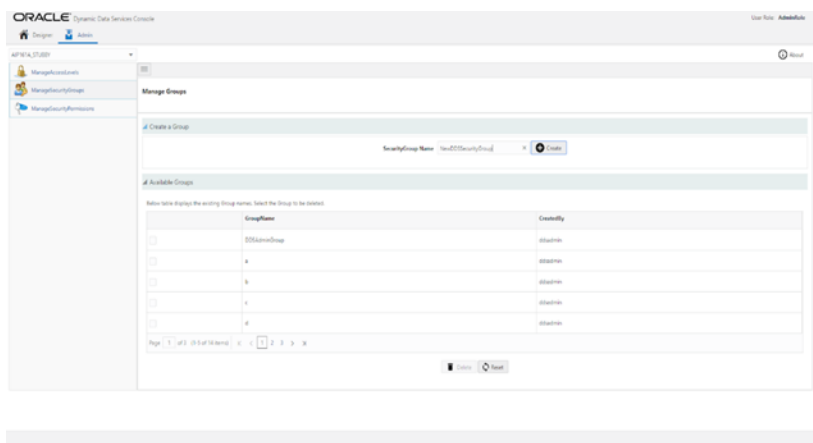


Manage Security Groups

This tab includes functionality for the creation and deletion of Security Groups. Security Groups are groups of users that have a certain level of data access. These, along with one or more access levels, can be assigned to a table to limit access to data and functionality in the Designer tab.

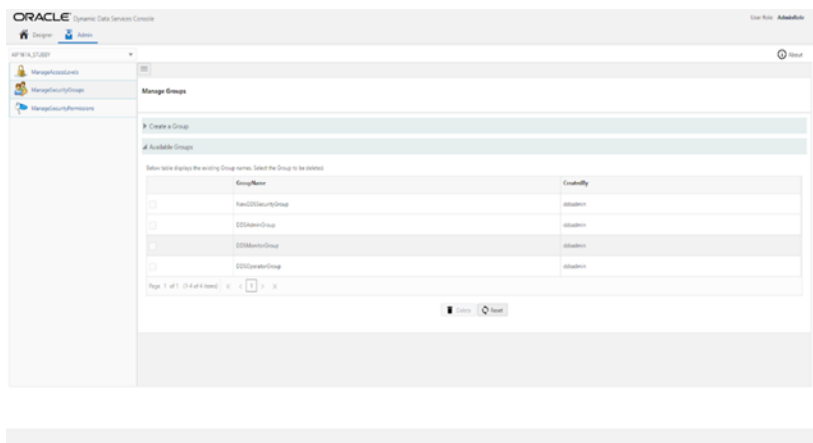
To create a Security Group

1. Input a name in the Name text box.
2. Click **Create**.



To delete a Security Group

1. Select the Security Group to be deleted from the table that displays the available Security Groups.
2. Click **Delete**.

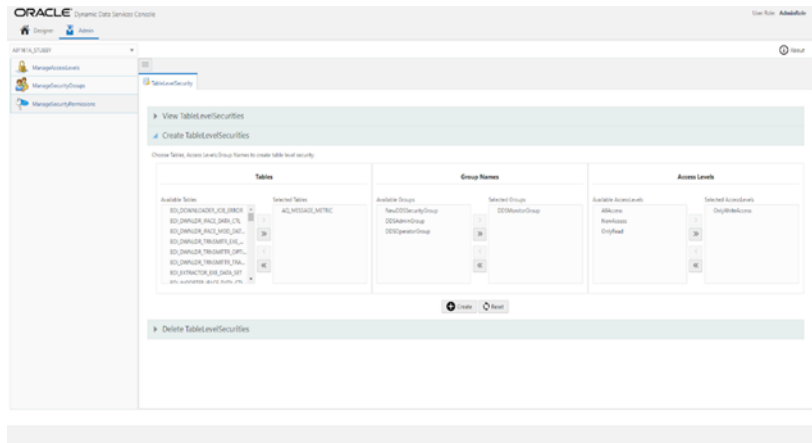


Manage Security Permissions

This tab allows the user to create and delete Security Permissions. Security Permissions are a combination of one or more Access levels in a Security Group mapped to a table to restrict data access and also limit functionality, like removing the ability to create, modify or delete data.

To create a Security Permission for a table

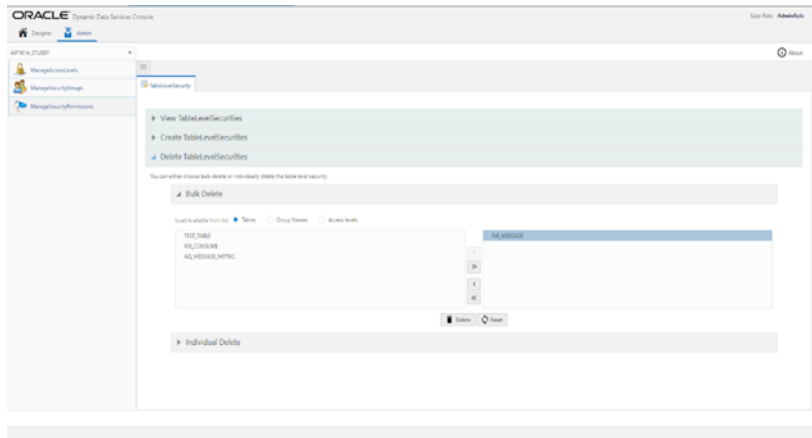
1. In the Create TableLevelSecurities collapsible pane, select the desired table.
2. Then select the required security group.
3. Finally select the required access level(s).
4. Click **Create**.



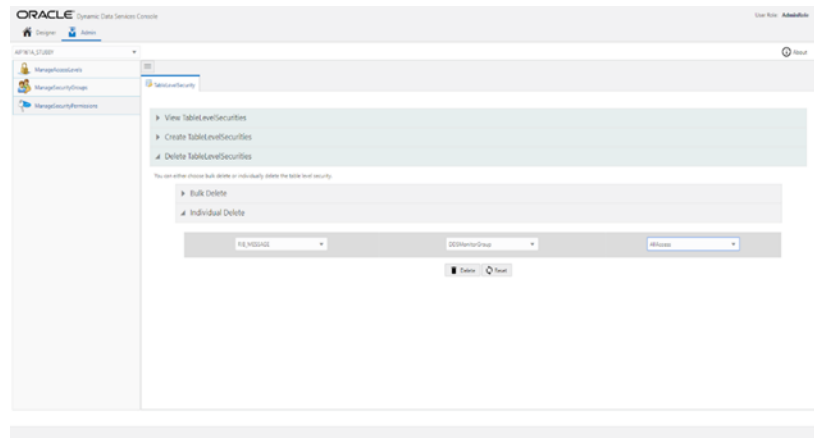
To delete Security Permission(s)

Functionality is provided to either perform bulk delete or individual deletion of security.

1. To bulk delete security permissions:
 - a. Select the required table name(s) or security group(s) or access level(s).
 - b. Click **Delete**.



2. To individually delete security permissions:
 - a. Select the required table name.
 - b. Select the particular security group associated.
 - c. Select the associated access level.
 - d. Click **Delete**.



Designer Tab Guide

This tab contains all the CRUD operations to be performed by user on tables in the database schema. The user can select the desired database schema available in the database schema dropdown. It has two sections:

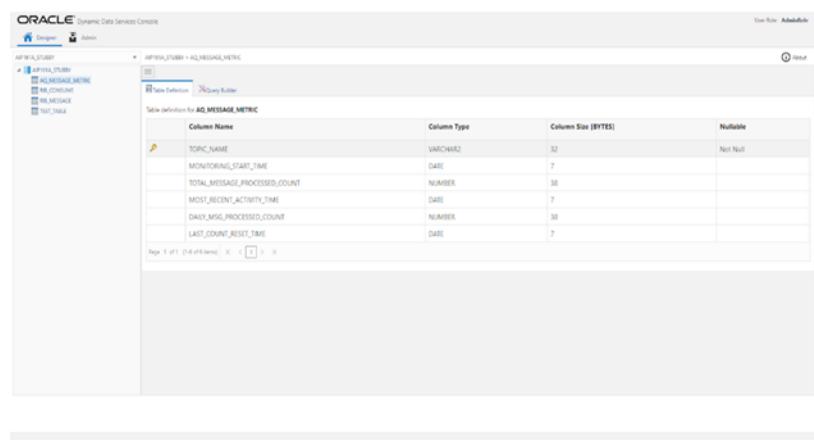
- Table Definition
- Query Builder

Make sure the user has sufficient permissions before performing any action in the designer tab.

Table Definition

This tab allows the user to see the basic definition of the Database table in a simplified format presented in a tabular form.

To view a table's definition, select the required table from the list of tables from the left pane of the screen. Clicking on the table name will load the definition on the display screen under the Table Definition tab.



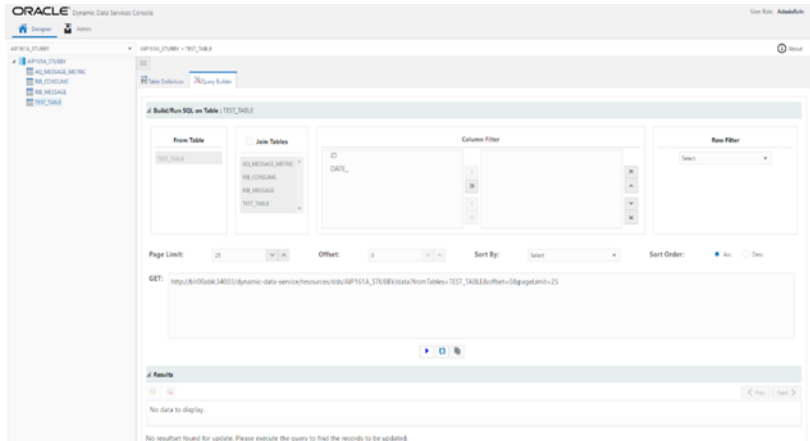
Query Builder

This tab holds the functionality for data manipulation. Functions include Querying records to creation, modification and deletion of records.

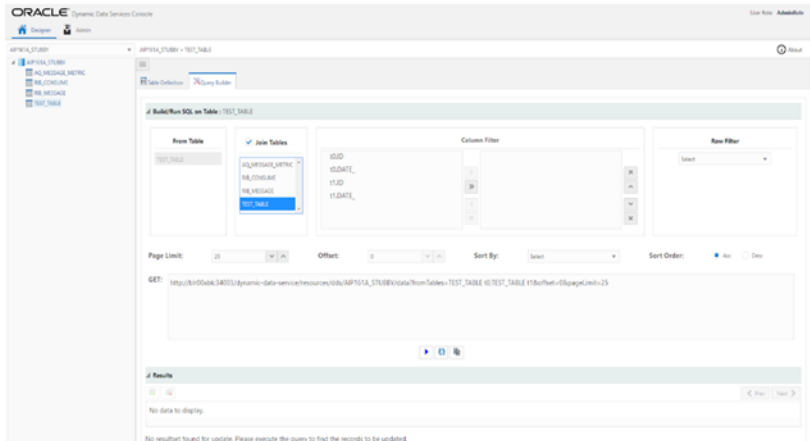
Data Selection

To Query records from a table:

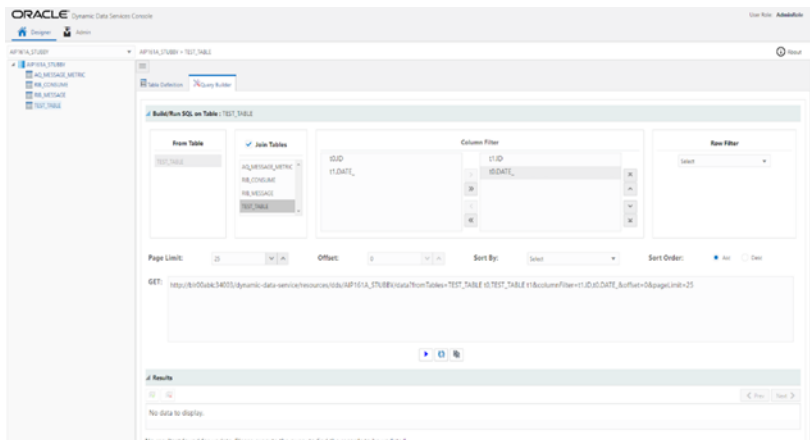
1. Select the table from the list of tables on the left pane of the screen.



2. Enable join if the join operation is necessary.
3. Select the table to which the join is to be done, select the same table as selected in (1) to do a self-join.

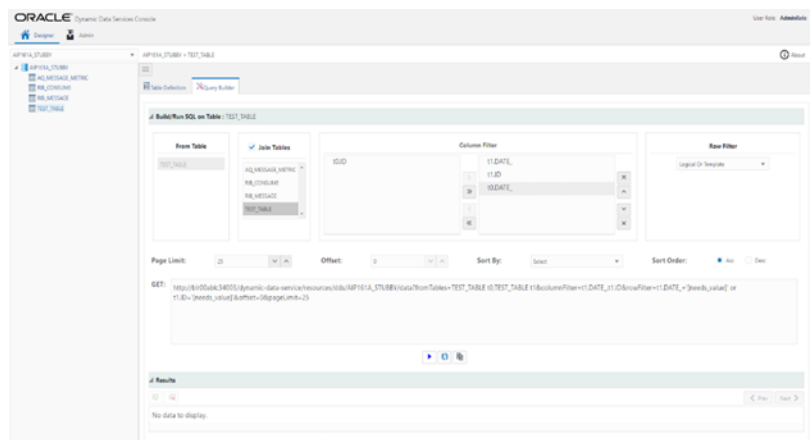


4. Select the columns which are to be displayed in the column filter. Only the column names on the right side of the box will be displayed. If all columns are to be displayed, do not move any columns to the right box.

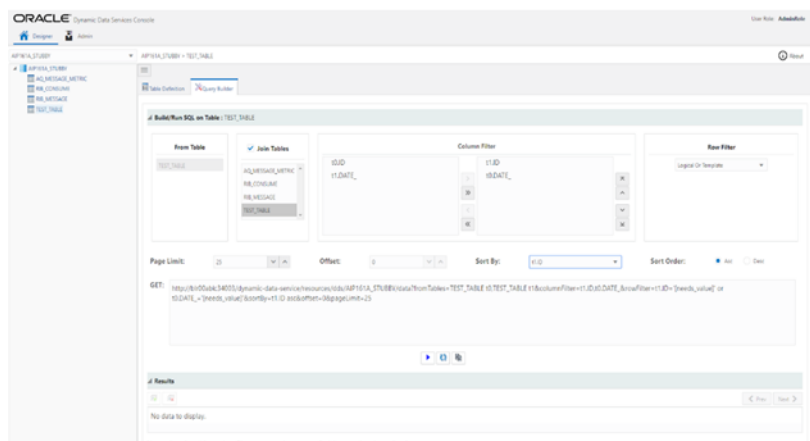





5. Select the row filter.

Note: The row filter is applied only to the first two columns in the table, so reorder the columns such that the ones that have to be used as row filter are in the two positions.



6. Set the page limit, this is the number of records that are to be displayed on one page, the remaining records will be paginated and displayed upon request.
7. The Sort by drop down list works if there are columns selected for a column filter. Select the desired column, and then select the sort order, ascending or descending.




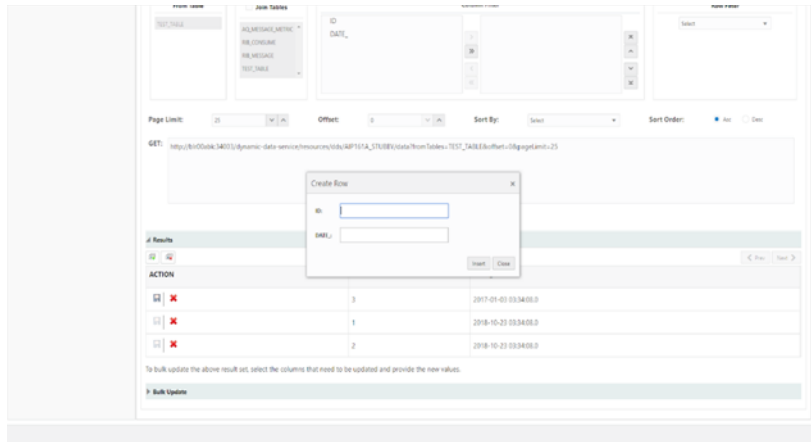
8. Click on the run button  to get the Query results using the settings configured earlier.
9. The reset button  sets the settings back to default.
10. The copy query button  is used to copy the GET query generated in the "GET" box. Click on the button and the link is copied. Paste the link in a browser and press enter/return to execute the query.

Data Insertion

To insert the data in the table:


1. The query results from the GET call are displayed here in an editable tabulated format.

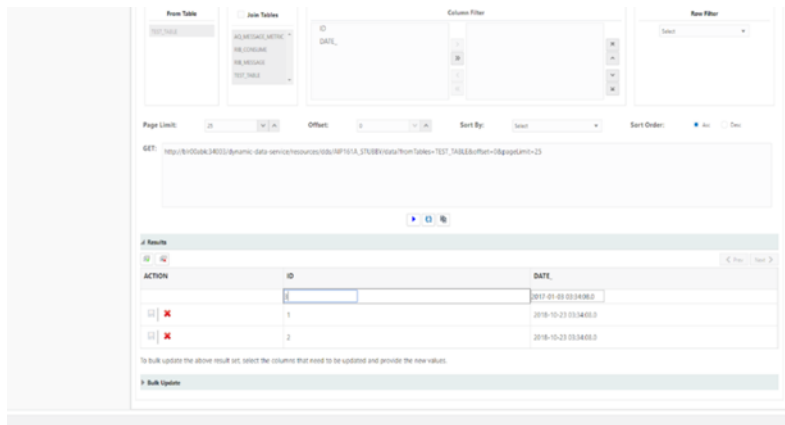
2. To insert a record click on the insert record button .
3. In the pop-up, enter the data. Make sure to enter all values for not null columns.
4. Click **Insert**.
5. The record will be successfully inserted after validation.



Data Modification

To modify existing data, select the data from desired table.

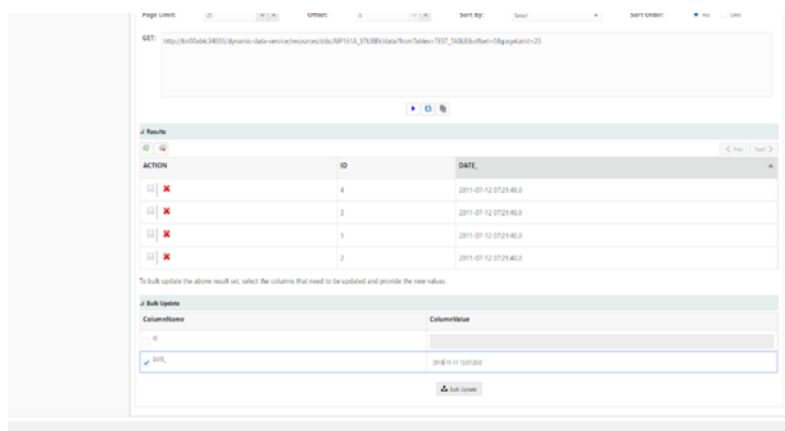
1. Double click on the record to be modified
2. Edit the contents
3. Press escape on the keyboard to exit edit mode and click on the save button  to save the changes.
4. Message - Record updated successfully will be displayed after validation




Bulk Updatons of Data

The option is available to update bulk records on selected data. To bulk update column(s):

1. In the bulk update collapsible pane one or more columns for all records in the queried table can be updated with a single value, if the column is not unique.
2. Select the checkbox of the required column to enable edit mode.
3. Enter the data as necessary.




4. Click the Bulk Update option  to update the selected columns for all the records in the table.
5. Records will be updated after successful validation of data.

Data Deletion

This option is available to perform individual and bulk deletions of records.

Individual Delete - To delete a single record, click the delete button  on the corresponding record.

Bulk Delete -To delete all records, click the delete all button  and confirm once the confirmation dialog pops up.

The number of records deleted message will be displayed upon successful deletion of records.

